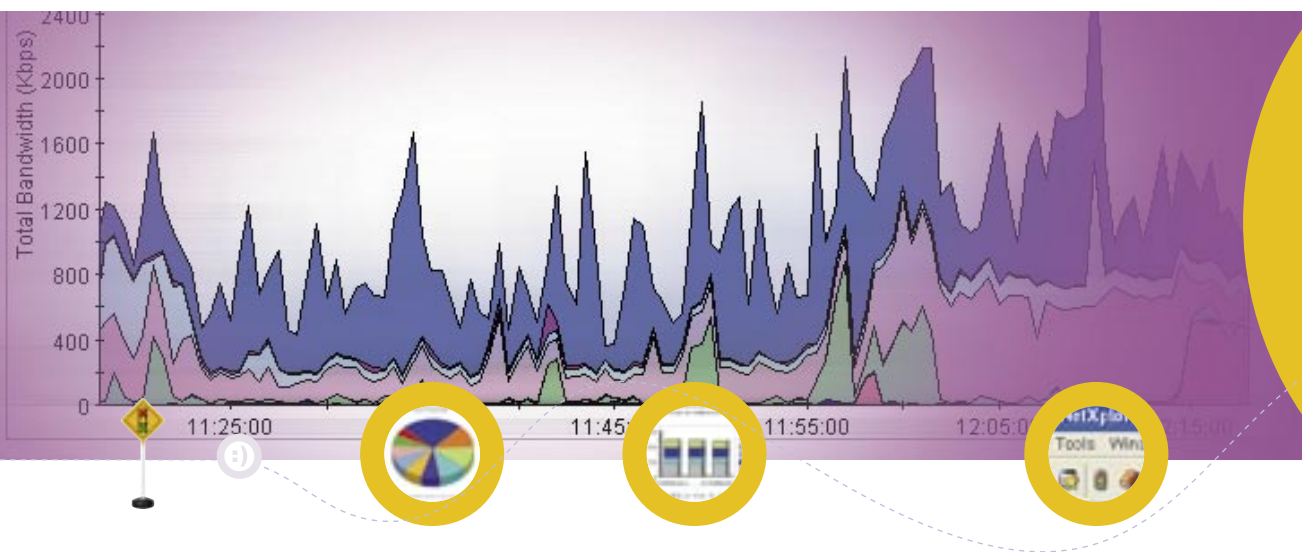




# NetXplorer

Centralized, Proactive Management of All Network Traffic



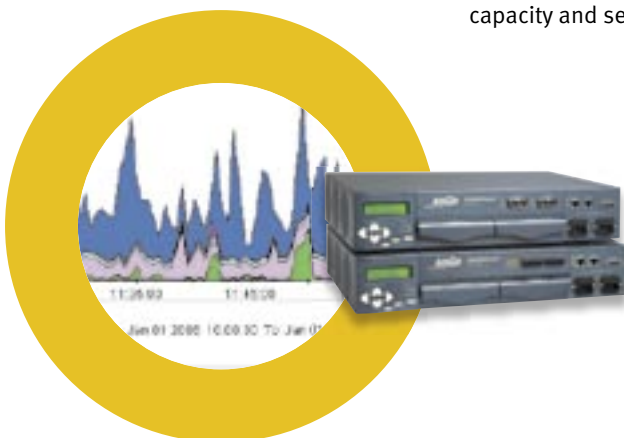
As the scalable management system for Allot Service Gateway, Allot NetEnforcer, and Allot Subscriber Management Platform, Allot NetXplorer provides a bird's-eye view of all traffic on the network, coupled with the dynamic provisioning, alerting, accounting, and policy-based control needed to manage IP/broadband services efficiently and profitably.

By integrating Layer-7 deep packet inspection (DPI) technology with dynamic, policy-based service control, Allot NetXplorer supplies the **network business intelligence** that is essential for IP service optimization on critical broadband links. NetXplorer allows network operators to see and understand how their bandwidth is being consumed by applications and users on the network, and to directly link service and performance policies to their business goals. A full complement of real-time monitoring and long-term reporting capabilities provides unsurpassed visibility for proactive troubleshooting and for analyzing traffic trends to assist with capacity and service planning.

**Service Providers** use NetXplorer to:

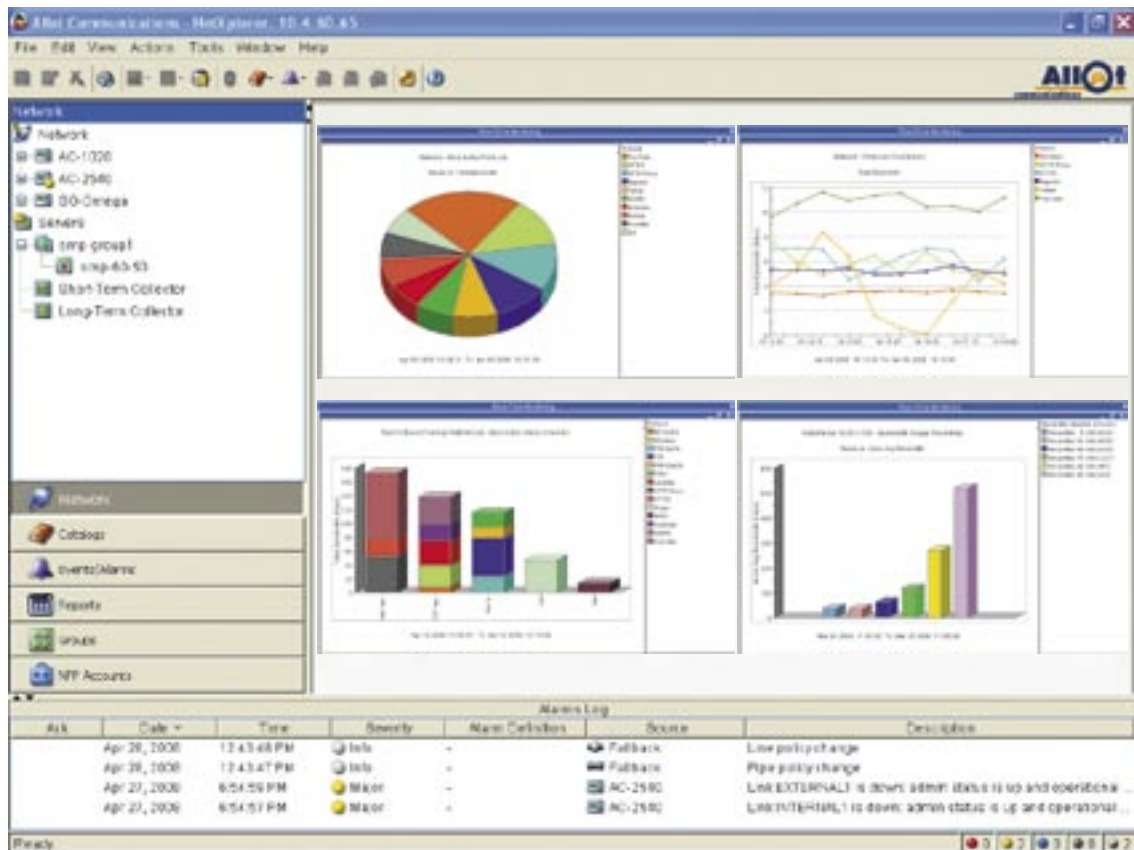
- Deploy differentiated value-added services that increase ARPU
- Deliver quality of experience that enhances customer satisfaction
- Control capex and opex
- Meter traffic for billing and quota purposes
- Offer self-monitoring and self-provisioning services to business customers

**Enterprises** use NetXplorer for proactive network management to ensure the performance of business-critical applications and to contain network costs.



# Extensive Range of Features

NetXplorer  
Favorite  
View



## Centralized Configuration/Provisioning

- Configure and manage Allot Service Gateway, NetEnforcer, and SMP elements from a single GUI
- Define policies once and propagate to all managed elements
- Download updates to protocol and signature library once and propagate automatically to all managed elements
- Provide a single point of integration between Allot elements in the network and other operator systems such as provisioning, OSS, billing, and portals

## Real-time Monitoring

- Real-time monitoring provides precise traffic statistics according to operator-selected resolutions of 30 seconds, 5 minutes, or 1 hour, with automatic refresh and short-term data storage

- Network problems quickly diagnosed using top-down approach with intuitive drill-down to zoom in on a specific period of time, connection, or user session
- Highly granular statistics available for up to 48 hours to assist with post-mortem analysis of problems

## Rich Set of Reports

- Predefined graphical reports provide multiple perspectives on Consumption, Utilization, Most Active, Distribution, and Volume statistics
- Ability to create hundreds of customized reports
- Ability to filter and display traffic data by in, out, or total bandwidth; by live, new or dropped connections; by inbound or outbound packets; by protocol, application, host, and conversation (session)

- Ability to filter and display subscriber statistics by individual user, user group, service plan, and quota plan
- Easy navigation including zoom or scroll to view all report data, graph or tabular format, desired time-frame, and drill-down to view more granular data
- Ability to schedule reports for automatic generation and email distribution
- Multiple chart styles including color-coded bar, pie, line, and stack-area charts
- Favorite View arranges up to 10 frequently used reports on-screen for efficient viewing
- Variety of report export formats, including JPEG, PNG, HTML, XML and CSV
- CLI interface for automation of reports, with creation and extraction from NetXplorer by external systems

## Valuable Add-ons

### Powerful Policy Control

NetXplorer's full set of service catalogs and provisioning tools make it easy to build customized Quality of Service (QoS) policies. Policy definitions may include any combination of priority, bandwidth allocation, access, traffic shaping and quota actions to be taken on application and subscriber traffic. Additionally, standard CLI and SOAP interfaces allow external systems to provision policies and distribute them to all managed elements.

### Network Service Protection

Integration with Allot ServiceProtector provides attack awareness and enables automatic mitigation of Denial of Service (DoS/DDoS) attacks, Zero Day attacks, worms, zombie and spambot behavior.

### Intelligent Alarms

SNMP traps are triggered on system and device failures, or on abnormal events per operator-defined thresholds. Color-coded alarms, prominently displayed in the NetXplorer GUI, can be exported automatically to pre-defined email or SMS destinations.

### Accounting Interface

NetXplorer's Accounting interface enables direct export of raw traffic statistics to external systems at close to real-time intervals. Data includes incoming and outgoing packets per subscriber, policy, protocol (application) or host and provides input to operator OSS, billing, analysis and reporting systems. Accounting statistics are available as standard CSV files and JDBC format.

A number of advanced capabilities are available as licensable add-ons to the basic NetXplorer software.

### NetXplorer Reporter – long-term reporting and analysis

- Provides historical traffic statistics according to operator-selected resolution of 1 day, 1 week or 1 month, with automatic storage of long-term data for up to 12 months
- Facilitates analysis of traffic trends and internet usage habits to assist with capacity planning and chargeback
- Popularity, Typical Time, and Percentile reports (including 95th Percentile) support accurate usage analysis and service provider billing requirements

### Country Classification – managing international links

Country Classification allows operators classify and manage traffic according to country of origin or destination, and to create different QoS policies for domestic and international traffic.

### NetPolicy Provisioner (NPP) – value-added self-management

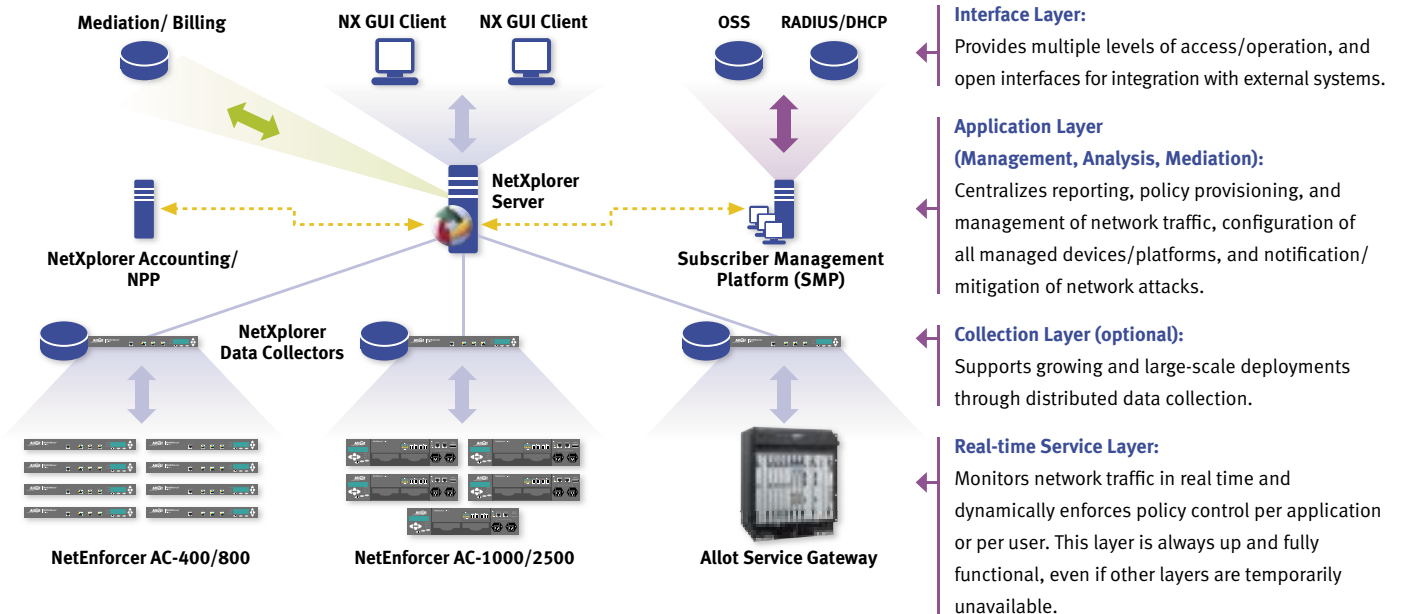
NetPolicy Provisioner adds distinctive value to provider-carrier service offerings by allowing them to offer self-monitoring and self-provisioning capabilities to their VPN, ISP, and managed services customers. Via NPP's web-based GUI, which is accessible from any browser window, customers gain direct access to a predefined set of NetXplorer real-time monitoring reports with full display options and drill-down capabilities. If desired, the provider may also permit customers to provision and adjust QoS policies within predefined limits. (See the Allot NPP datasheet for details)

NetXplorer Policy Table

Name	Status	Priority	Internal	External	Service	Time	Access	Action
Default	On	100	Yes	Yes	All Traffic	Anytime	Anyall	NormalPrio
Video	On	90	Yes	Yes	Web Apps	Anytime	Anyall	NormalPrio
Audio	On	80	Yes	Yes	CDP	Anytime	Anyall	NormalPrio
FTP	On	70	Yes	Yes	All Traffic	Anytime	Anyall	NormalPrio
SSH	On	60	Yes	Yes	All Traffic	Anytime	Anyall	NormalPrio
SMTP	On	50	Yes	Yes	All Traffic	Anytime	Anyall	NormalPrio
POP3	On	40	Yes	Yes	All Traffic	Anytime	Anyall	NormalPrio
IMAP	On	30	Yes	Yes	All Traffic	Anytime	Anyall	NormalPrio
HTTP	On	20	Yes	Yes	All Traffic	Anytime	Anyall	NormalPrio
HTTPS	On	10	Yes	Yes	All Traffic	Anytime	Anyall	NormalPrio
ICMP	On	0	Yes	Yes	All Traffic	Anytime	Anyall	NormalPrio
IGMP	On	0	Yes	Yes	All Traffic	Anytime	Anyall	NormalPrio
UDP	On	0	Yes	Yes	All Traffic	Anytime	Anyall	NormalPrio
TCP	On	0	Yes	Yes	All Traffic	Anytime	Anyall	NormalPrio
ICMPv6	On	0	Yes	Yes	All Traffic	Anytime	Anyall	NormalPrio
IGMPv6	On	0	Yes	Yes	All Traffic	Anytime	Anyall	NormalPrio
UDPv6	On	0	Yes	Yes	All Traffic	Anytime	Anyall	NormalPrio
TCPv6	On	0	Yes	Yes	All Traffic	Anytime	Anyall	NormalPrio

# Scalable System Architecture

NetXplorer's fully distributed design allows the system to scale upward by adding functional elements at the appropriate architectural layers, while maintaining overall management from a central server.



## Specifications

### NetXplorer Server Hardware Requirements

Minimum for Managing One NetEnforcer Unit	Minimum for Managing Multiple NetEnforcer Units (up to 5 AC-400 or 2 AC-800)	Recommended for Managing Multiple NetEnforcer Units or Service Gateway, and when using NetXplorer Reporter, NetPolicy Provisioner (up to 15 AC-400; 10 AC-800; 5 AC-1000 or AC-2500; 1 SG-Omega)	Manages Allot Devices/Platforms
Intel Xeon (quad-core or dual-core), Intel Pentium D (dual-core) or Intel Pentium 4 1GB standard memory DDR II Serial ATA HDD (minimum capacity of 40 GB)	Intel Pentium 4 2.8 GHz or higher Intel Chipset Based (925 or 955) 2 GB RAM (Dual Channel) 1x80 GB HDD, 8MB Cache (SATA interface recommended) Windows XP Professional, Service Pack 2 Linux: Red Hat Enterprise Linux Server 5, 32bit or 64bit installed	Dual Xeon 3.0 GHz or higher 4 GB RAM (Dual Channel) HDD SCSI/SAS 15K RPM RAID Controller with BWCC 256MB Cache Required disk space: • 20GB per each AC-1000/AC-2500 • 10GB per each AC-800/AC-400 Write-back cache policy enabled Mirror Based RAID (10, 51 or 61) Recommended Server Brands: IBM, HP, Dell Windows 2003 Server SP1 Linux: Red Hat Enterprise Linux Server 5, 32bit or 64bit installed	NetEnforcer – all models Allot Service Gateway Allot Subscriber Management Platform (SMP) Integrated with Allot ServiceProtector Controller

### About Allot Communications

Allot Communications (NASDAQ: ALLT) is a leading provider of intelligent IP service optimization solutions for DSL, wireless and mobile broadband carriers, service providers, and enterprises. Allot's rich portfolio of hardware platforms and software applications utilizes deep packet inspection (DPI) technology to transform broadband pipes into smart networks that can rapidly and efficiently deploy value added Internet services. Allot's scalable, carrier-grade solutions provide the visibility, security, application control and subscriber management that are vital to managing Internet service delivery, guaranteeing quality of experience (QoE), containing operating costs, and maximizing revenue in broadband networks.

[www.allot.com](http://www.allot.com) [info@allot.com](mailto:info@allot.com)

- **Americas:** 7664 Golden Triangle Drive, Eden Prairie, MN 55344 USA · Tel: (952) 944-3100 · Toll free: (877) 255-6826 · Fax: (952) 944-3555
- **Europe:** NCI – Les Centres d’Affaires Village d’Entreprises ‘Green Side’, 400 Avenue Roumanille, BP309, 06906 Sophia Antipolis Cedex, France · Tel: 33 (0) 4-93-001167 · Fax: 33 (0) 4-93-001165
- **Asia Pacific:** 6, Ubi Road 1, Wintech Centre 6-12, Singapore 408726 · Tel: 65 6841-3020 Fax: 65 6747-9173
- **Japan:** Puri-zaido Ochanomizu 301, 4-2-3 Kanda Surugadai, Chiyoda-ku, Tokyo 101-0062 · Tel: 81 (3) 5297-7668 · Fax: 81(3) 5297-7669 · [www.allot.jp](http://www.allot.jp)
- **Middle East and Africa:** 22 Hanagar Street, Industrial Zone B, Hod-Hasharon, 45240, Israel · Tel: 972 (9) 761-9200 · Fax: 972 (9) 744-3626

